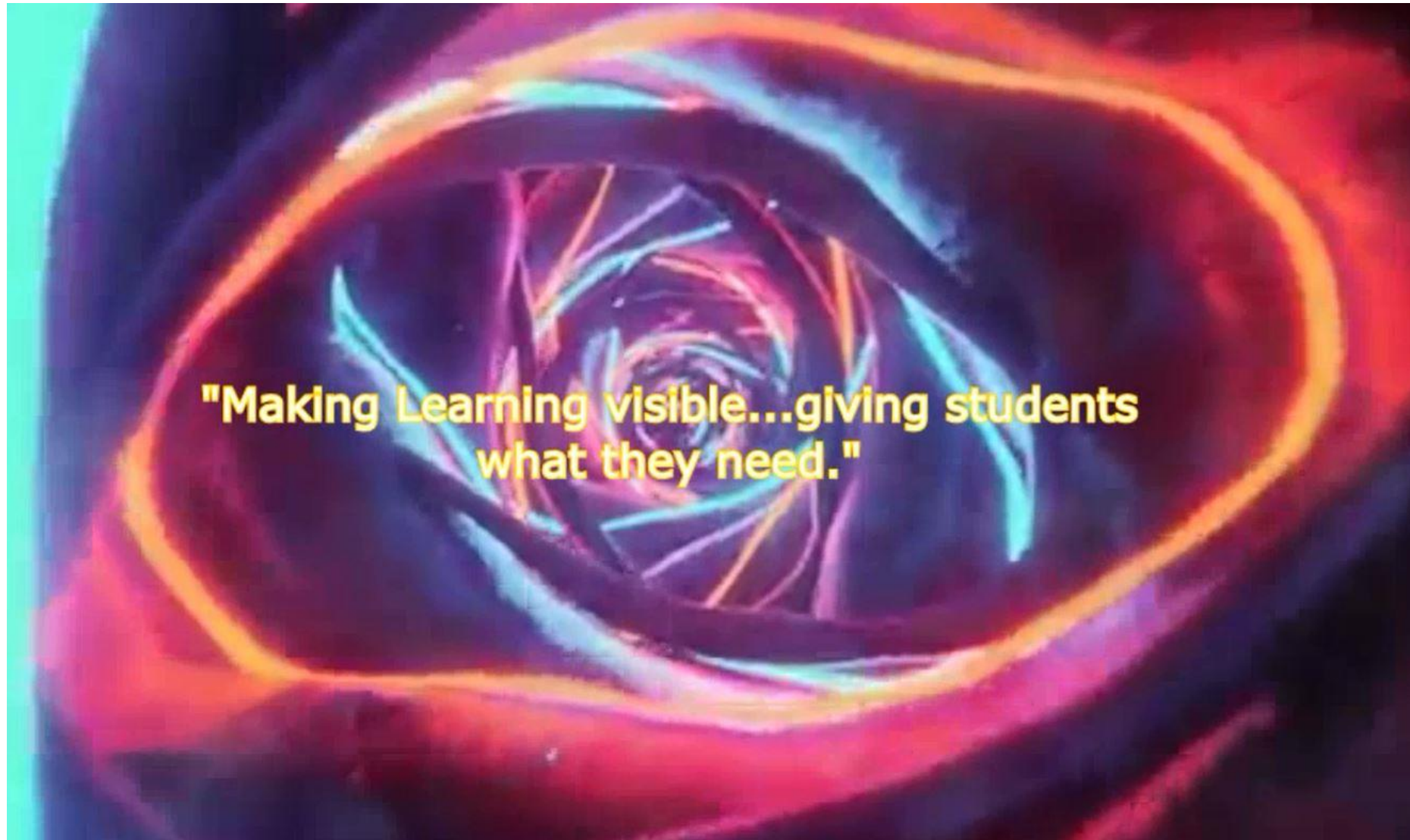


Click on the Graphic Below to View the Cohort Report Video



**"Making Learning visible...giving students
what they need."**



Chula Vista Elementary School District

**2017-18 Proposed
Facilities Rental Rates
May 3, 2017**

District Responsibilities

- Civic Center Act - School Districts allow use of facilities/grounds to community and certain organizations when an alternative location is not available.
- Governing Board authorizes use when no interference with school activities at following rates.
 - No Charge; Direct Cost Charge; Fair Rental
- 2008 last fee rate change; and 2013 last custodial rate change.
- Fees charged at a per hour rate.
- 2015-16 Facilities Use Fees cost recovery was about \$52,000.

Fees

- **No Charge** -For non-profits organizations, clubs or associations organized to promote youth and school activities, such as Girl Scouts, Boy Scouts, Camp Fire, PTAs.
- **Direct Cost** – for non-profits groups not organized to promote youth and school activities, such as religious organizations, dance, and exercise groups.
 - Direct Costs = per hour cost of operations, utilities, and maintenance.
- **Fair Rental Value**- for commercial groups and non-profits using facilities for entertainment/meeting where admission is charged and net receipts not used for charitable purpose or for welfare of students.
 - Fair Rental Cost = Direct Costs plus facilities depreciation.

2017-18 Proposed Direct and Fair Rental Rates (Effective July 1, 2017)

SCHOOL SITE FACILITY	DIRECT COSTS PER HOUR		FAIR RENTAL PER HOUR	
	CURRENT	PROPOSED	CURRENT	PROPOSED
Multipurpose Room	\$25.00	\$26.75	\$36.00	\$37.00
Library/Computer Lab	\$13.00	\$13.50	\$18.00	\$18.50
Regular Classroom	\$6.00	\$6.50	\$9.00	\$9.00
Kindergarten Classroom	\$6.00	\$6.50	\$9.00	\$9.00
Lounge/Conference Room	\$4.00	\$4.00	\$5.25	\$5.50
Field/Lunch Arbor/Parking Lot	\$13.00	\$13.50	\$18.00	\$18.50
Kitchen	\$13.00	\$13.50	\$18.00	\$18.50

Continued...

2017-18 Proposed Direct and Fair Rental Rates (Effective July 1, 2017)

(continued)

EDUCATION AND SUPPORT SERVICES FACILITY	DIRECT COSTS PER HOUR		FAIR RENTAL PER HOUR	
	CURRENT	PROPOSED	CURRENT	PROPOSED
ESSC Room A*	-----	\$6.75	-----	\$9.50
ESSC Room B*	-----	\$3.50	-----	\$4.50
ESSC Room A & B*	-----	\$10.25	-----	\$14.00
ESSC Room C**	-----	\$14.50	-----	\$20.25
ESSC Room D (New Room)	-----	\$2.50	-----	\$3.50
ESSC Room E (New Room)	-----	\$2.00	-----	\$2.75
ESSC Room F (New Room)	-----	\$2.00	-----	\$2.50

* Rooms A and B together known as the Lowell J. Billings, Ed.D. Board Room

** Room C formerly known as Room C/D

Continued...

2017-18 Proposed Direct and Fair Rental Rates (Effective July 1, 2017)

(continued)

FACILITY	DIRECT COSTS PER HOUR		FAIR RENTAL PER HOUR	
	CURRENT	PROPOSED	CURRENT	PROPOSED
	ESSC Early Childhood (New Room)	-----	\$8.75	-----
District Custodial Overtime Rate per hour (3 hours minimum)	\$42.35	\$49.69	\$42.35	\$49.69

District Cafeteria worker rates will be based on actual appropriate rate.



Thank You!

Questions?

Comments?